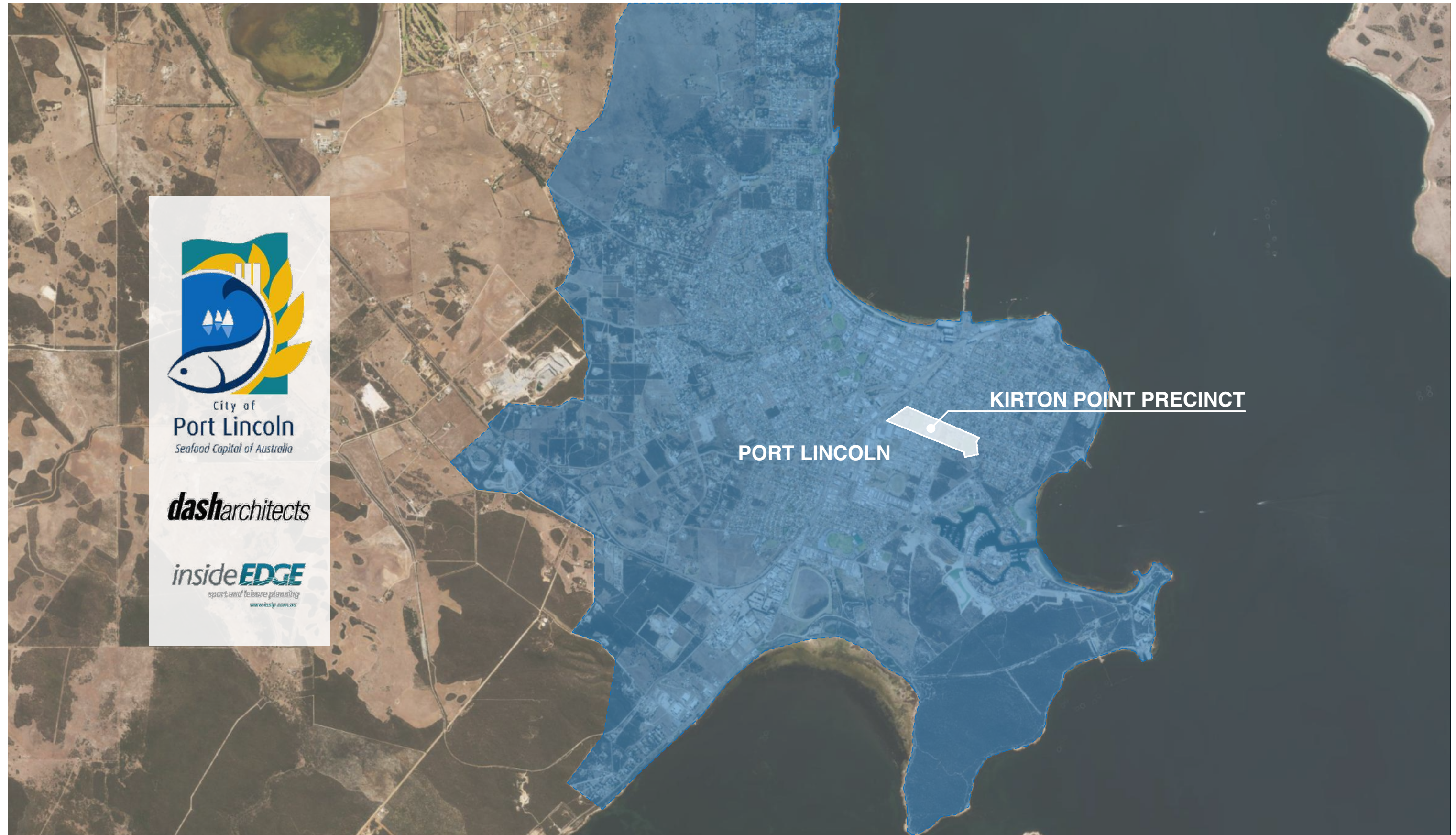


KIRTON POINT PRECINCT

PORT LINCOLN SPORTS PRECINCTS MASTER PLAN

GUIDING PRINCIPLES FOR SPORTING ASSETS



City of
Port Lincoln
Seafood Capital of Australia

dasharchitects

insideEDGE
sport and leisure planning
www.inslp.com.au

GUIDING PRINCIPLES



CURRENT MASTER PLAN PROCESS

- Prioritise assets and improvement needs for grouping organisations.
- Find synergies to co-locate organisations and maximise the use of existing assets.
- Prioritise facility improvement to those associations experiencing growth.
- Create high quality, fit for purpose, active recreation and sporting infrastructure.

OPEN SPACE STRATEGY 2021-2026

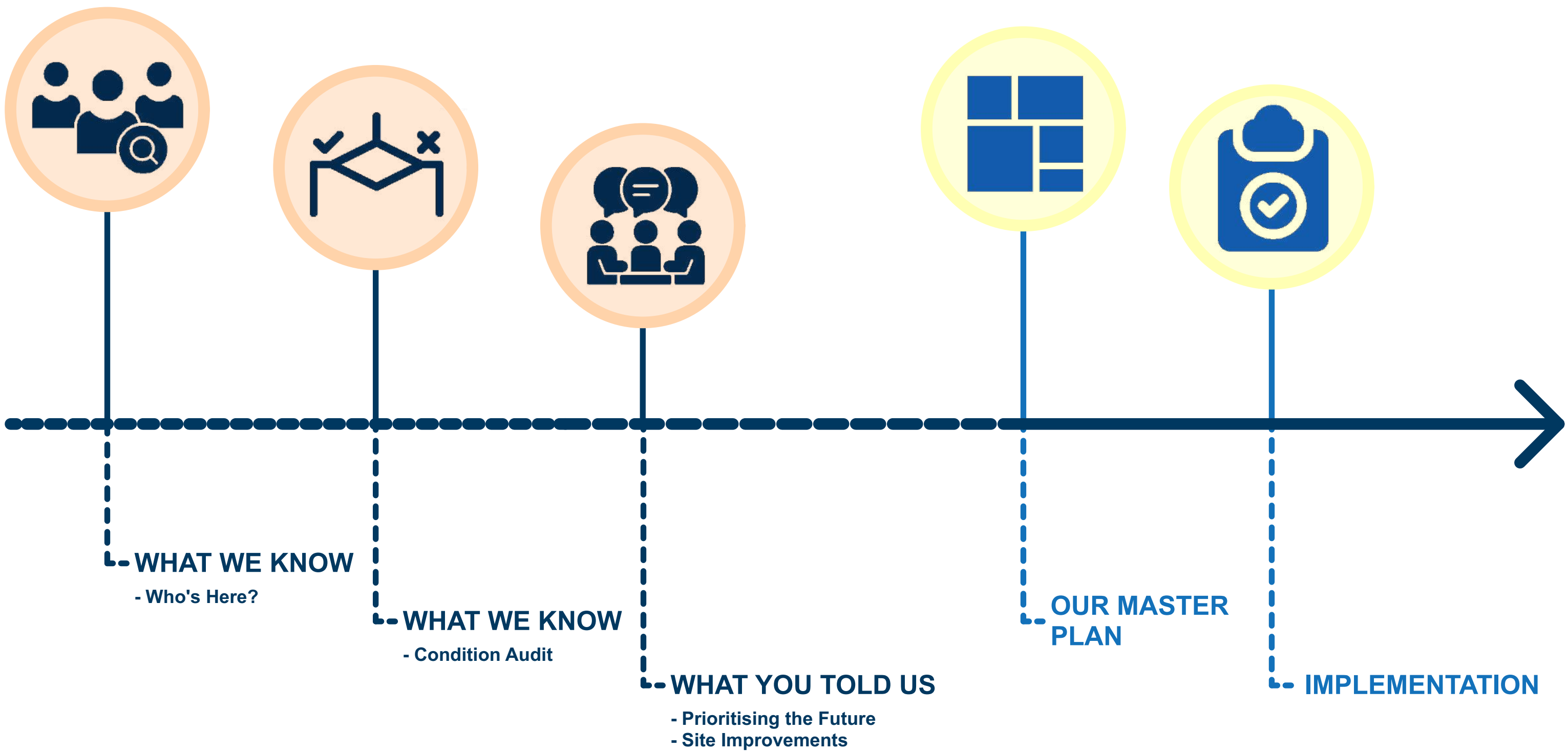
- Tailor infrastructure and maintenance of sporting facilities in public open space to the significance / popularity of use of the asset.
- Share sporting facilities as much as possible between different activities / users to maximise return on infrastructure investments.

SPORT & RECREATION STRATEGY 2023-2027

- Prioritise assets and improvement needs for grouping organisations.
- Find synergies to co-locate organisations and maximise the use of existing assets.
- Prioritise facility improvement to those associations experiencing growth.
- Create high quality, fit for purpose, active recreation and sporting infrastructure.

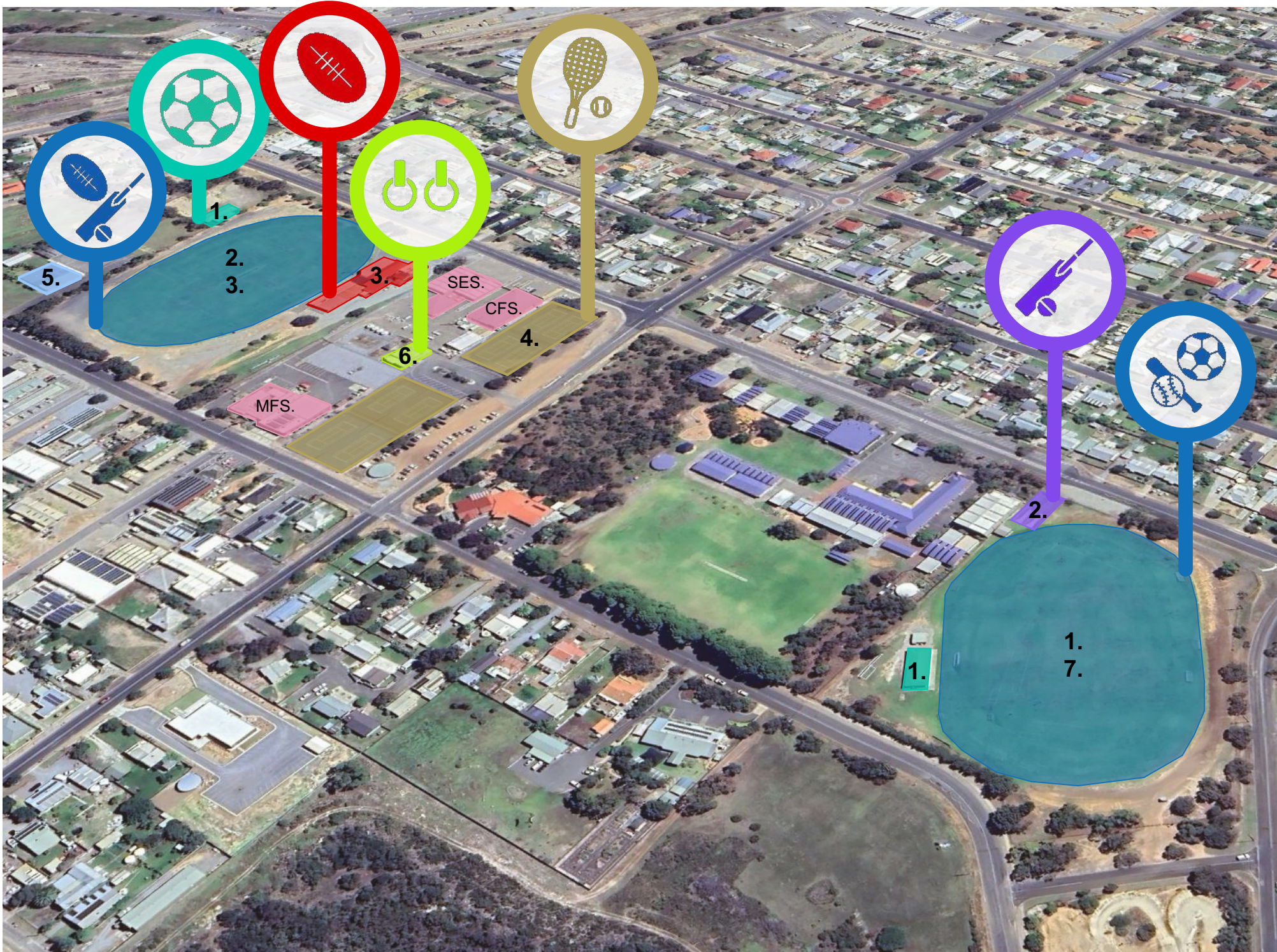
PROCESS

HOW WILL WE GET THERE?



WHAT WE KNOW

WHO's HERE?



1. PORT LINCOLN SOCCER AND SPORTING ASSOCIATION

- Clubrooms occasional but not often used facilities at Poole Oval
- Dislocated from playing grounds at Kirton Oval
- Canteen at Kirton Oval
- 28 teams of varying age
- 400 members
- 2 junior size pitches, 1 senior size pitch
- PLSA change building in poor condition at Kirton Oval
- Lighting needed

2. CHARLTON CRICKET CLUB

- Cricket pitch at Poole Oval for games
- Cricket nets at Kirton Oval
- Shed at Kirton Oval

3. BOSTON SPORTING CLUB

- Has 7 teams in underage and senior competition
- 300 members
- Good clubrooms
- Change rooms to be upgraded to regional standard (BFC has plans)
- Lighting upgrade is planned
- Boston happy to host soccer juniors

4. PORT LINCOLN TENNIS ASSOCIATION

- Leased
- Courts in reasonable condition
- Opportunity for netball
- Tennis court overflow

5. CROATIAN SPORTING CLUB PORT LINCOLN

6. PORT LINCOLN CALISTHENICS CLUBROOM

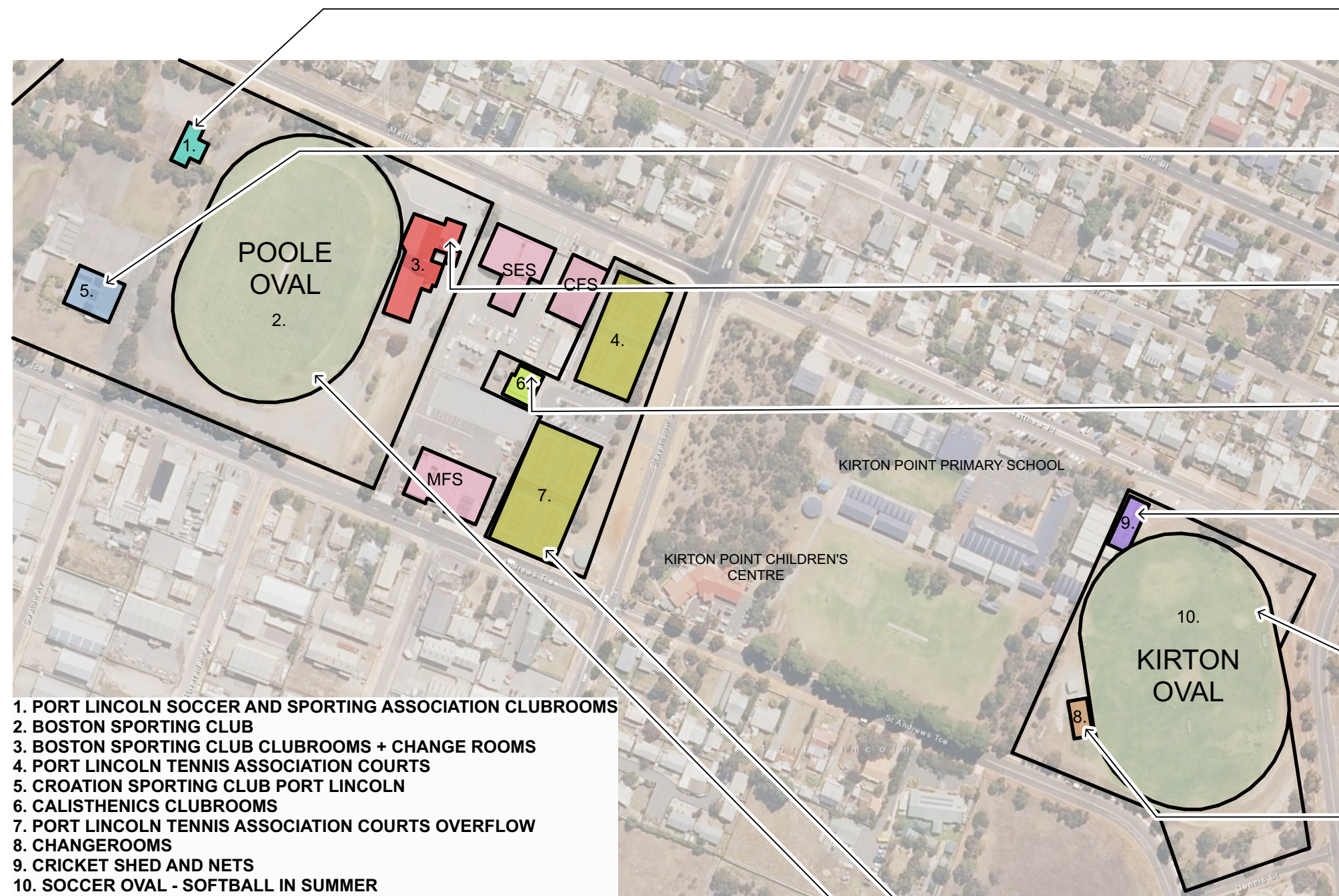
- Lease facility from council

7. KIRTON OVAL - PORT LINCOLN & DISTRICT SOFTBALL ASSOCIATION

- Runs 2 diamonds
- Season Starts September so no clash with soccer

WHAT WE KNOW

CONDITION AUDIT



<u>Port Lincoln Soccer and Sporting Association Clubrooms</u> Clubrooms in poor to moderate condition. Old change + canteen facility in need of replacement to upgrade facilities to required standards and scale to suit competitions. Improvements not Council-owned.
<u>Croatian Sporting Club Port Lincoln</u> Moderate/good condition. Improvements not council-owned.
<u>Boston Sporting Club</u> Facility (club rooms) are large and in good condition - possibly mid-life. Change room / sporting facilities are mid-life, requiring a refresh/replan (plans are underway to upgrade to regional standards).
<u>Port Lincoln Calisthenics Clubroom</u> Poor/moderate condition
<u>Charlton Cricket Club</u> Nets in reasonable condition (need 3 nets for local level). Oval width and length meet with SACA guidelines.
<u>Oval Playing Surfaces</u> Turf in good condition, with noticeable areas of wear and slow turf recovery. Ageing irrigation systems. Fencing in poor/moderate condition. No formal carparking or lighting.
<u>Port Lincoln Soccer and Sporting Association</u> Clubrooms in poor to moderate condition. Old change + canteen facility in need of replacement to upgrade facilities to required standards and scale to suit competitions. Improvements not Council-owned.
<u>Port Lincoln Tennis Association</u> <u>Oval Playing Surfaces</u> Turf in good condition although notable challenges in managing wear through corridor. Fencing in moderate condition. Concrete cricket wicket with removable cover. New LED lighting.

SITE PLAN

WHAT YOU TOLD US

PRIORITISING THE FUTURE & SITE IMPROVEMENTS



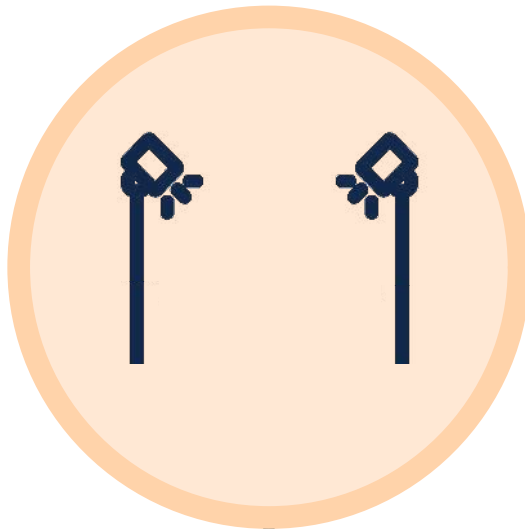
Stevenson Street
courts relined to
multi-netball / tennis -
flexibility for possible
visiting teams to
Boston Football Club



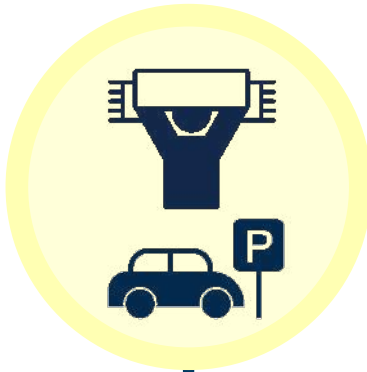
Kirton Oval club
rooms, grandstands,
canteen, and change
rooms



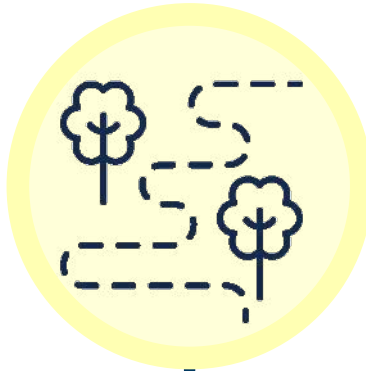
Improved playing
surfaces
- Irrigation
upgrades
- Improved
drainage and sub
layers



Improved Lighting
to playing surfaces



Improve game
day experience
at Boston
Sporting Club
and Parking



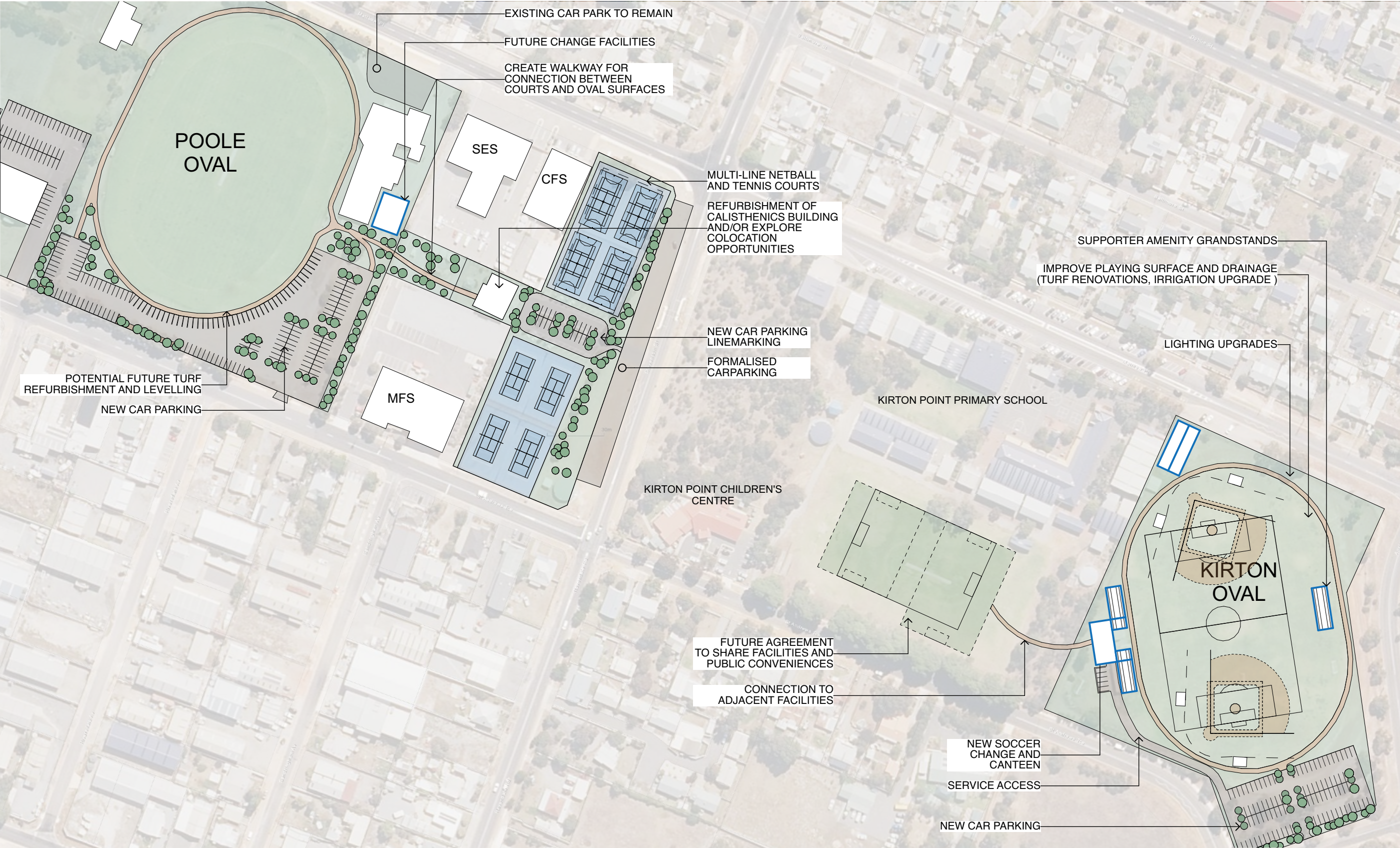
Improved
connection
throughout the
site



Connecting
tennis / netball /
football

OUR MASTER PLAN

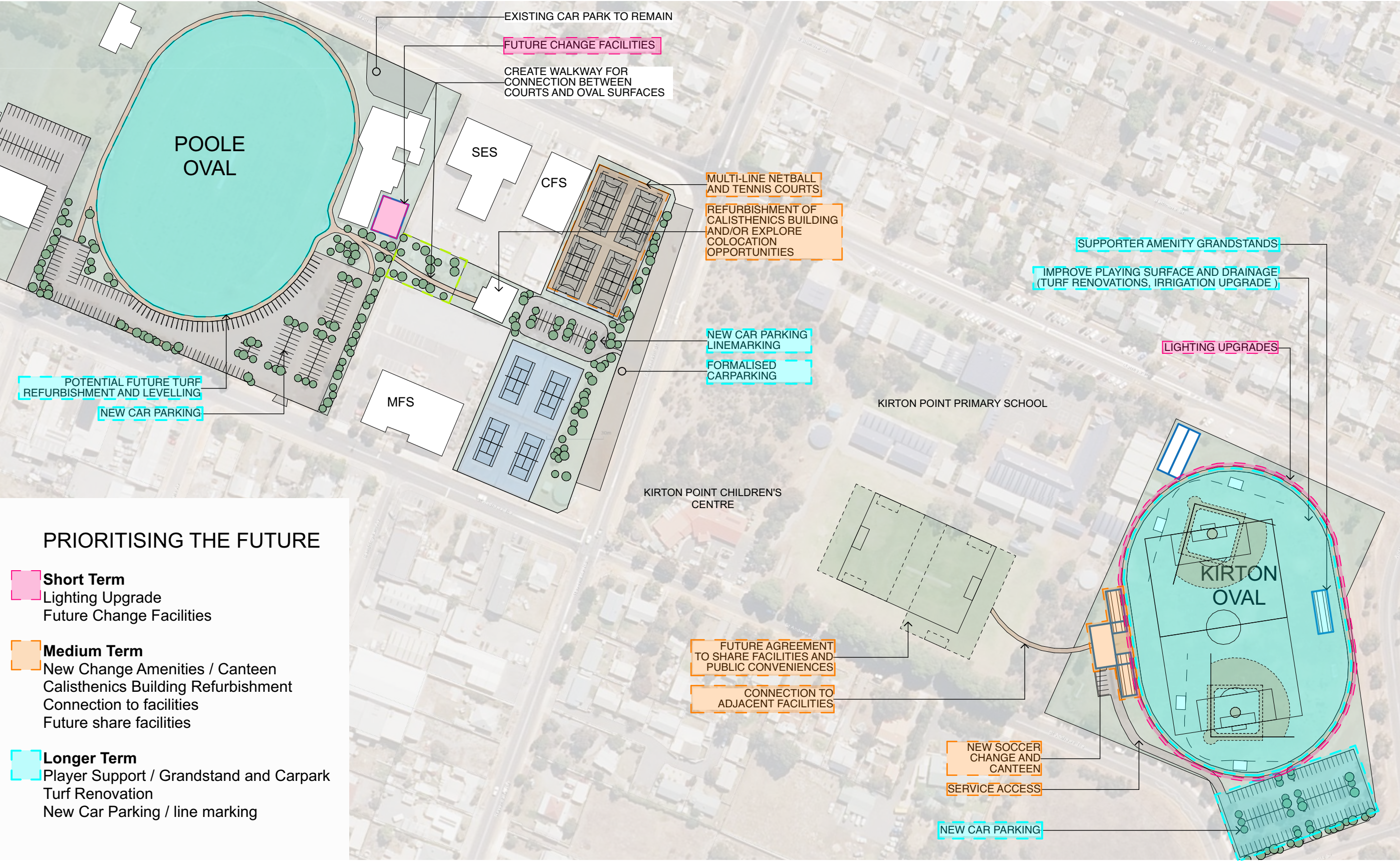
PRIORITISING THE FUTURE



SITE PLAN
Scale 1:2000

IMPLEMENTATION PLAN

PRIORITISING THE FUTURE



PRIORITISING THE FUTURE

- Short Term**
 - Lighting Upgrade
 - Future Change Facilities
- Medium Term**
 - New Change Amenities / Canteen
 - Calisthenics Building Refurbishment
 - Connection to facilities
 - Future share facilities
- Longer Term**
 - Player Support / Grandstand and Carpark
 - Turf Renovation
 - New Car Parking / line marking

SITE PLAN

Scale 1:2000